

## **Above Ground Grease Traps**

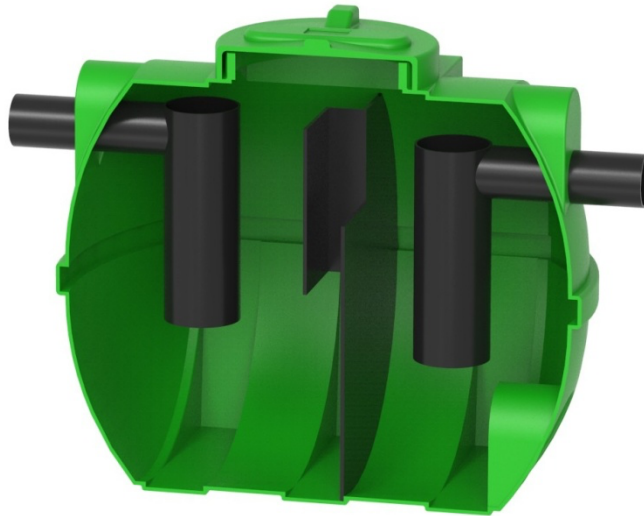
### ***Details***

#### Description

### **Above Ground Grease Traps**

Above ground Grease Traps for domestic kitchens or commercial premises producing wastewater containing fats oils and grease, designed to fit under sink or Free standing.

Romast Grease traps are easy to install, require low maintenance and deliver long lasting performance making them an ideal choice.



## Grease separator NG 2 - 500 L RoFett (200 meals)

### *Details*

Grease tends to form heavy congestion that grows steadily, stops wastewater flow, damages the sewage infrastructure, pose a public health hazard and result in business losses. Separate grease from wastewater in institutional kitchens, restaurants and food processing facilities is polluted with fat and grease. RoFett is extremely efficient in cleaning water contaminated with grease of organic origins. The systems are easily installable, require very little maintenance and are guaranteed to deliver long-lasting performance. Compatible with other water treatment systems.

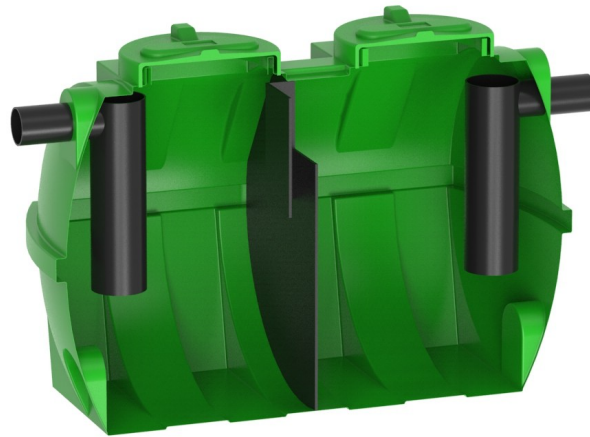
### *Additional Information*

**Product code** 7400075310

**Product type** Greaseseparators

**Usage** outside

**Voir instructions en 3 PDF**



## **Grease separator NG 3 - 1.000 L RoFett (300 meals)**

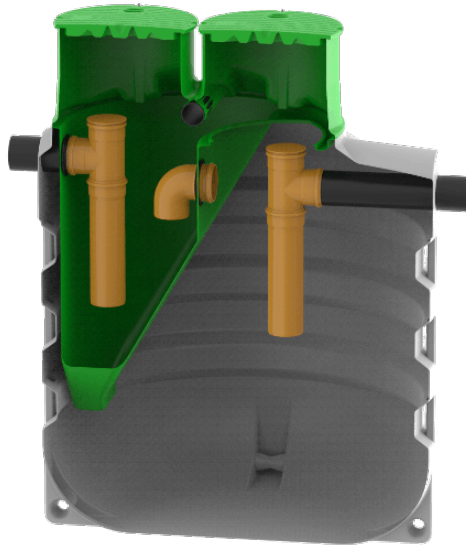
### ***Details***

Grease tends to form heavy congestion that grows steadily, stops wastewater flow, damages the sewage infrastructure, pose a public health hazard and result in business losses. Separate grease from wastewater in institutional kitchens, restaurants and food processing facilities is polluted with fat and grease. RoFett is extremely efficient in cleaning water contaminated with grease of organic origins. The systems are easily installable, require very little maintenance and are guaranteed to deliver long-lasting performance. Compatible with other water treatment systems.

### ***Additional Information***

<b>Product code</b>	7400075370
<b>Product type</b>	Greasesepar
<b>Usage</b>	outside

**VOIR INSTRUCTIONS EN 3 PDF**



## **Grease Separators RoGre**

### ***Details***

#### **Description**

### **Rogre Grease Separators**

Rogre Grease Separators – a compact grease separator manufactured in accordance with EN 1825. Manufactured from environmentally friendly material (polyethylene LLDPE), Rogre are very durable, lightweight and resistant against various chemical substances used in kitchens.

The compact design allows for fast and easy underground installation, whilst the large opening gives easy access for maintenance and cleaning.

Rogre Grease separators require low maintenance and deliver long lasting performance making them an ideal choice.

#### **Size Range**

Six models are available ranging from 1000 ltr to 7500 Ltr: NG2,4,7,10,15 & 20. All models have a large sealed lid allowing easy access for cleaning.



## Grease separator NG 4 - 2.000 L RoFett (400 meals)

### *Details*

Grease tends to form heavy congestion that grows steadily, stops wastewater flow, damages the sewage infrastructure, pose a public health hazard and result in business losses. Separate grease from wastewater in institutional kitchens, restaurants and food processing facilities is polluted with fat and grease. RoFett is extremely efficient in cleaning water contaminated with grease of organic origins. The systems are easily installable, require very little maintenance and are guaranteed to deliver long-lasting performance. Compatible with other water treatment systems.

### *Additional Information*

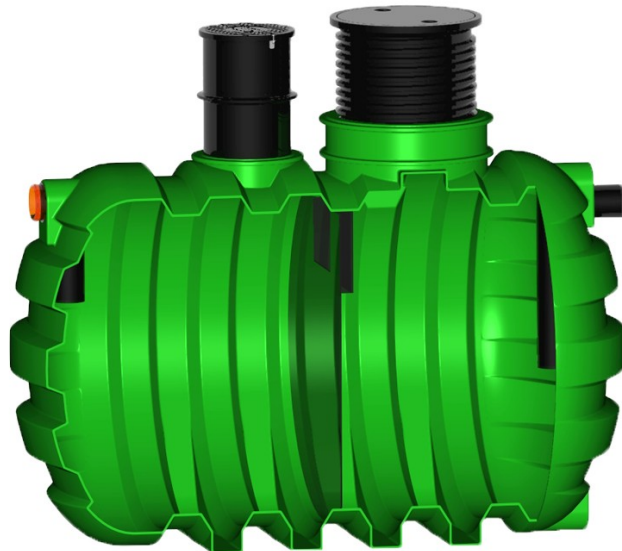
**Product code** 7400075320

**Product type** Greaseseparators

**Usage** outside

questionnaire

Voir instructions en 3 PDF



## **Grease separator NG 10 - 5.000 L RoFett (1000 meals)**

### ***Details***

Grease tends to form heavy congestion that grows steadily, stops wastewater flow, damages the sewage infrastructure, pose a public health hazard and result in business losses. Separate grease from wastewater in institutional kitchens, restaurants and food processing facilities is polluted with fat and grease. RoFett is extremely efficient in cleaning water contaminated with grease of organic origins. The systems are easily installable, require very little maintenance and are guaranteed to deliver long-lasting performance. Compatible with other water treatment systems.

### ***Additional Information***

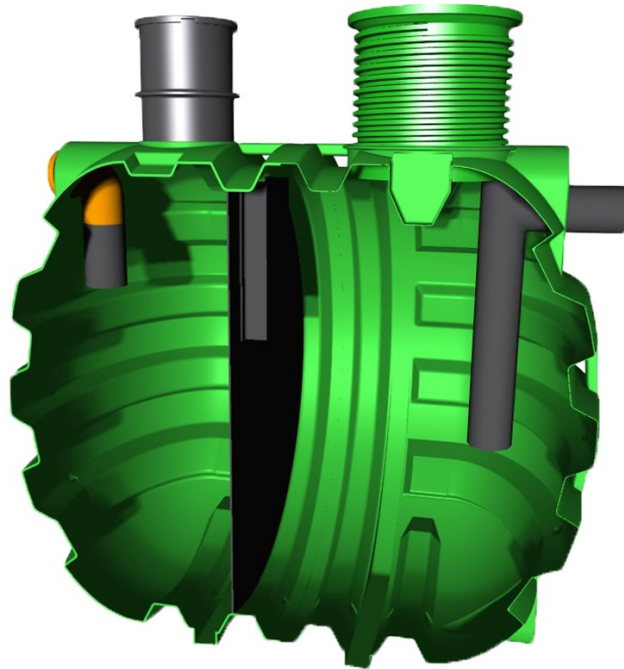
**Product code** 7400075360

**Product type** Greaseseparators

**Usage** outside

questionnaire

**Voir Instructions en 3 PDF**



## **Grease separator NG 15 - 6.000 L RoFett (1500 meals)**

### ***Details***

Grease tends to form heavy congestion that grows steadily, stops wastewater flow, damages the sewage infrastructure, pose a public health hazard and result in business losses. Separate grease from wastewater in institutional kitchens, restaurants and food processing facilities is polluted with fat and grease. RoFett is extremely efficient in cleaning water contaminated with grease of organic origins. The systems are easily installable, require very little maintenance and are guaranteed to deliver long-lasting performance. Compatible with other water treatment systems.

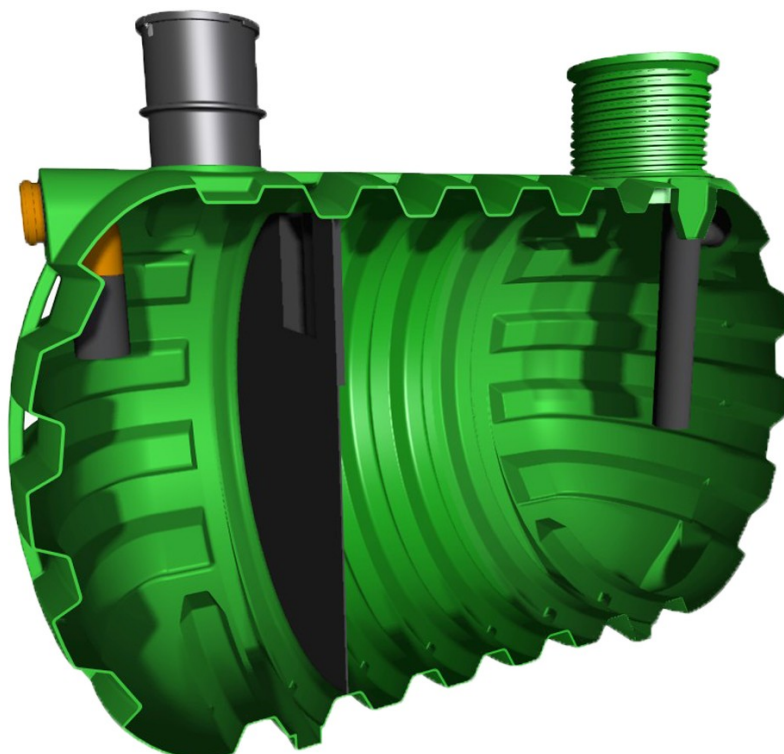
### ***Additional Information***

**Product code** 7400075340

**Product type** Greaseseparators

**Usage** outside

**Voir instructions en 3 PDF**



## **Grease separator NG 20 - 8.000 L RoFett (2000 meals)**

### ***Details***

Grease tends to form heavy congestion that grows steadily, stops wastewater flow, damages the sewage infrastructure, pose a public health hazard and result in business losses. Separate grease from wastewater in institutional kitchens, restaurants and food processing facilities is polluted with fat and grease. RoFett is extremely efficient in cleaning water contaminated with grease of organic origins. The systems are easily installable, require very little maintenance and are guaranteed to deliver long-lasting performance. Compatible with other water treatment systems.

### ***Additional Information***

**Product code** 7400075390

**Product type** Greaseseparators

**Usage** outside

**questionnaire**

**Voir instructions en 3PDF**